

KEY TO INSTRUMENTATION

Instruments

- MAC 550
- Source 4 11'
- Source 4 26'
- Source 4 38'
- Source 4 50'
- Source 4 Zoom 15-30'
- Strand 6x16
- Strand 6x12
- 8' Fissel
- PAR 54 WFL
- Source 4 PAR WFL
- D60 Medium Oval
- D60 Medium
- ColorScan Far Cyc
- MR16 Strip
- DLED Strip
- HAZER

Accessories

- Ins
- Template Holder
- Rosco I Cue

KEY

Typical Notation

Floor Mount

Boom Base

GENERAL NOTES

The drawing represents visual concepts and construction suggestions only. The Designer is responsible to determine the structural or electrical requirements of the design, and will assume responsibility for engineering, construction, handling or use. All work must comply with the most stringent applicable Federal and Local Fire, Safety, Energy, and Environmental Codes.

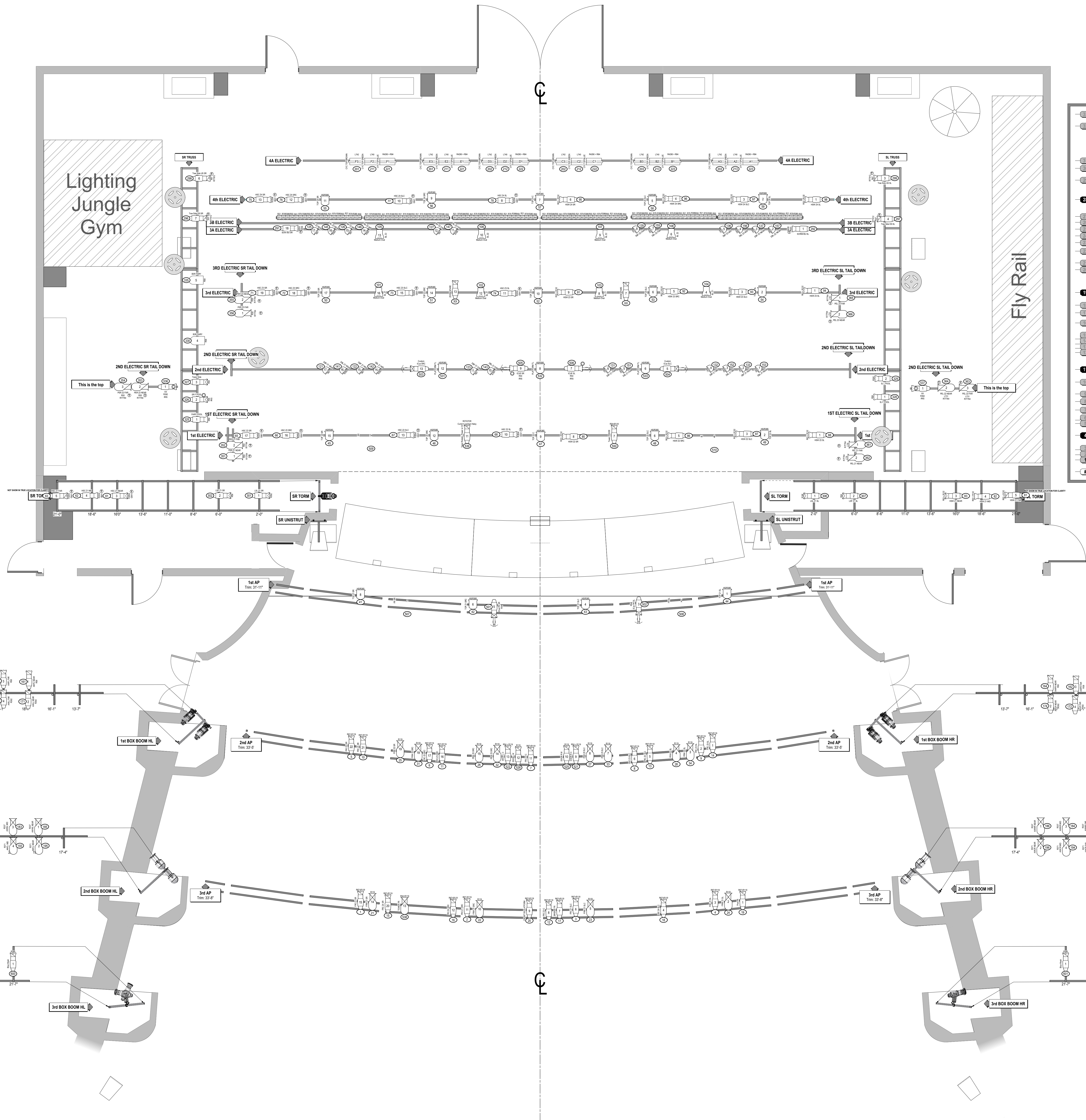
Lighting Designer:
HALEY MILLER
450-530-4045
H.MILLER@USC.EDU

USC School of Dramatic Arts
A MIDSUMMER NIGHT'S DREAM
DIRECTED BY: JEANETTE HARRISON
LIGHTING BY: HALEY MILLER
SCENERY BY: JOSE FREIRE
COSTUMES BY: JIMON SHIN
SOUND BY: BRIANNA BELLIPS

BING THEATRE
UNIVERSITY OF SOUTHERN CALIFORNIA

SCALE: 1/4" = 1'-0"
DATE: 8/2016
VERSION: 7
DRAWN BY: HALEY MILLER
APPY LIGHT

HANG PLOT



33	FLAT CYC	35'-3"	
32	WRAP CYC	34'-1"	
31	26' 4A ELECTRIC	30'-6"	
30	30' LEGS 3	29'-11"	
29	TREES	28'-9"	
28	24' 4th ELECTRIC	26'-10"	
27	BLACK SCRM	25'-2"	
26	3B ELECTRIC	24'-7"	
25	24' 3B ELECTRIC	23'-11"	
24	TREES	23'-3"	
23	30' LEGS 4	22'-7"	
22	BORDER 2	21'-9"	
21	AVAILABLE	20'-7"	
20	AVAILABLE	19'-11"	
19	25'-0" 3rd ELECTRIC	17'-8"	
18	LEGS 3	16'-5"	
17	BORDER 3	15'-8"	
16	AVAILABLE	14'-8"	
15	AVAILABLE	13'-11"	
14	AVAILABLE	12'-7"	
13	AVAILABLE	12'-7"	
12	AVAILABLE	11'-9"	
11	25'-0" 2nd ELECTRIC	10'-1"	
10	30' LEGS 2	8'-10"	
9	BORDER 2	7'-8"	
8	AVAILABLE	6'-11"	
7	AVAILABLE	6'-1"	
6	AVAILABLE	5'-1"	
5	MOVIE SCREEN	4'-8"	
4	24'-0" 1st ELECTRIC	3'-7"	
3	30' LEGS 1	2'-9"	
2	BORDER 1	1'-8"	
1	GRAND DRAPE	1'-2"	
#	TRIM	DESCRIPTION	TO PL

KEY TO INSTRUMENTATION

Instruments

- MAC 550
Used: 4 Remaining: 0
- Source 4 19'
Used: 5 Remaining: 0
- Source 4 26'
Used: 8 Remaining: 1
- Source 4 36'
Used: 45 Remaining: 5
- Source 4 50'
Used: 9 Remaining: 2
- Source 4 Zoom 15-30'
Used: 38 Remaining: 2
- Strand 6x16
Used: 25 Remaining: 9
- Strand 6x12
Used: 12 Remaining: 45
- 8" Fresnel
Used: 22 Remaining: 0
- PAR 64 MFL
Used: 25 Remaining: 18
- Source 4 PAR WFL
Used: 24 Remaining: 16
- D60 Medium Oval
Used: 12 Remaining: 0
- Colortran Far Cyc
Used: 6 Remaining: 0
- MR16 Strip
Used: 9 Remaining: 0
- DLED Strip
Used: 12 Remaining: 0
- HAZER

Accessories

- Iris
- Template Holder
- Rosco I-Cue

KEY

Typical Notation	Channel Number
Floor Mount	Gobo
Boom Base	Clay
	Unit Number
	Purpose

GENERAL NOTES

1. This drawing represents visual concepts and construction suggestions only. The Designer is unqualified to determine the structural or electrical appropriateness of the design, and will not assume responsibility for improper engineering, construction, handling, or use. All materials must comply with the most stringent applicable Federal and Local Fire, Safety, Energy, and Environmental Codes.

Lighting Designer:
HALEY MILLER
480-298-4045
HMMILLER@USC.EDU

Assistant Lighting Designer:
ABBY LIGHT
LIGHT@USC.EDU

SUB	REVISION	DATE
	Version 7	

USC School of Dramatic Arts
PRESENTS
A MIDSUMMER NIGHT'S DREAM

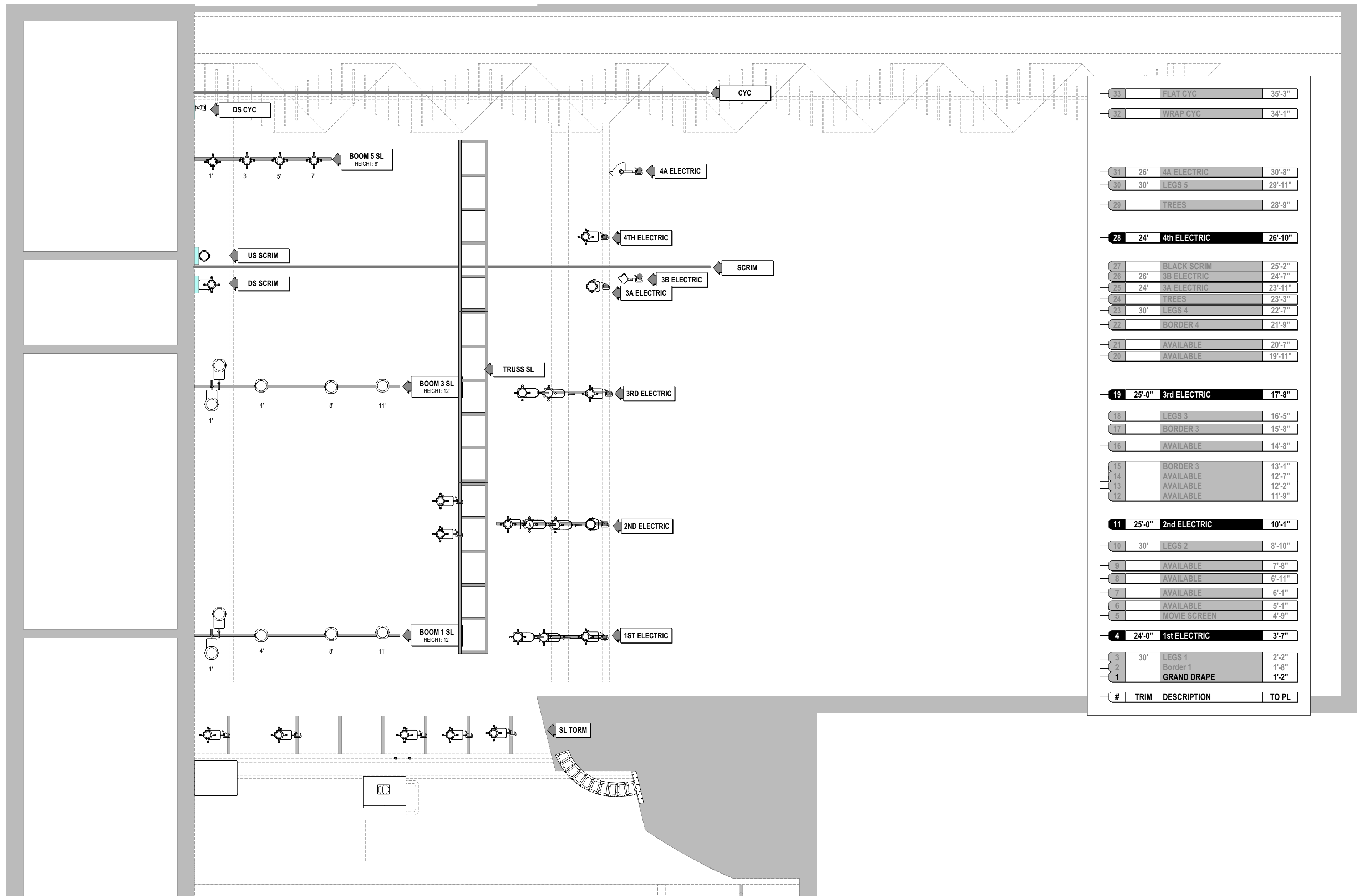
DIRECTED BY: JEANETTE HARRISON
LIGHTING BY: HALEY MILLER
SCENERY BY: JESS PEETERS
COSTUMES BY: JIWON SHIN
SOUND BY: BRIANNA BILLUPS

BING THEATRE
UNIVERSITY OF SOUTHERN CALIFORNIA

SCALE: 1/4" = 1'-0"
DATE: 9/29/16
VERSION: 7
DRAWN BY: HALEY MILLER
ABBY LIGHT

3
OF 4

SECTION SL



KEY TO INSTRUMENTATION

Instruments

MAC 550
Used: 4 Remaining: 0

Source 4 19'
Used: 5 Remaining: 0

Source 4 26'
Used: 8 Remaining: 1

Source 4 36'
Used: 4 Remaining: 5

Source 4 50'
Used: 8 Remaining: 2

Source 4 Zoom 15-30'
Used: 38 Remaining: 2

Strand 6x16
Used: 25 Remaining: 9

Strand 6x12
Used: 12 Remaining: 45

8" Fresnel
Used: 27 Remaining: 0

PAR 64 MFL
Used: 25 Remaining: 18

Source 4 PAR WFL
Used: 24 Remaining: 16

D60 Medium Oval
D60 Medium
Used: 12 Remaining: 0

Colortran Far Cyc
Used: 5 Remaining: 5

MR16 Strip
Used: 6 Remaining: 0

DLED Strip
Used: 12 Remaining: 0

HAZER

Accessories

Iris
Template Holder
Rosco I-Cue

KEY

Typical Notation

Floor Mount
Boom Base

Color
Unit Number
Purpose
Channel Number

GENERAL NOTES

1.

This drawing represents visual concepts and construction suggestions only. The Designer is unqualified to determine the structural or electrical appropriateness of the design, and will not assume responsibility for improper engineering, construction, handling, or use. All materials must comply with the most stringent applicable Federal and Local Fire, Safety, Energy, and Environmental Codes.

Lighting Designer:
HALEY MILLER
480-298-4045
HMMILLER@USC.EDU

Assistant Lighting Designer:
ABBY LIGHT
LIGHT@USC.EDU

SUB	REVISION	DATE
	Version 7	

USC School of Dramatic Arts
PRESENTS
A MIDSUMMER NIGHT'S DREAM

DIRECTED BY: JEANNETTE HARRISON
LIGHTING BY: HALEY MILLER
SCENERY BY: JESS PEETERS
COSTUMES BY: JIWON SHIN
SOUND BY: BRIANNA BILLUPS

BING THEATRE
UNIVERSITY OF SOUTHERN CALIFORNIA

SCALE: 1/4" = 1'-0"
DATE: 9/29/16
VERSION: 7
DRAWN BY: HALEY MILLER
ABBY LIGHT

PLATE
4
OF 4

SECTION SR

